

Introduction

Atlas-i70 is combination of connectivity, network electronics plus performance make it the ultimate router for the remote office.

- Connectivity: Electrical/optical Gigabit interface plus two slots capable of addressing a variety of interface cards and advanced routing software.

- Network electronics: Built-in 8-port Gigabit switch, expandable to 16 with the option to supply power over the Ethernet line (Max. 12xPoE ports).

- Performance: Based on a optimized hardware architecture that allows to the router to offer high performance in the transmission and encryption of corporate data.

Product Highlights

- ▶ Up to 1 Gbps symmetrical services
- ▶ Hardware encryption for high VPN performance
- ▶ Two slots (SFP, VDSL, G.SHDSL, E1, Serial,etc.)
- ▶ Built-in electrical/optical port
- ▶ Built-in, expandable 8-port switch, optional PoE
- ▶ Advanced software, IPSec, ToIP, CLI
- ▶ Traditional or SDWAN integrated router

Interfaces

Atlas-i70

2 x expansion slots	Cards SFP, VDSL, G.SHDSL, E1,Serial,etc.
Electrical/optical Gigabit Ethernet port	Optional (remotely activated)
8-port Gigabit Ethernet switch	Yes
PoE support(Up to 12xports)	Yes
Console port	Yes
Reset button	Yes
USB port for 3G/4G modems	Yes

Competitive Advantage

Powerful and scalable platform	New generation of high-power processors with the ability to scale to 1 Gbps services.
SDWAN router	Teldat-i70 enables smooth transition from traditional communications in remote offices to a hybrid SD-WAN network.
Two expansion slots	Can be adapted to a myriad of connectivity scenarios thanks to a variety of cards ADSL/VDSL, G.SHDSL, E1/T1, Serial, PoE Ethernet switch.
Extensive local connectivity	Up to 16 10/100/1000 Ethernet ports with advanced VLAN functions, 802.1p/q/x and 802.11n Wi-Fi access point. Optional PoE from 4 to 12 ports.

Scenarios

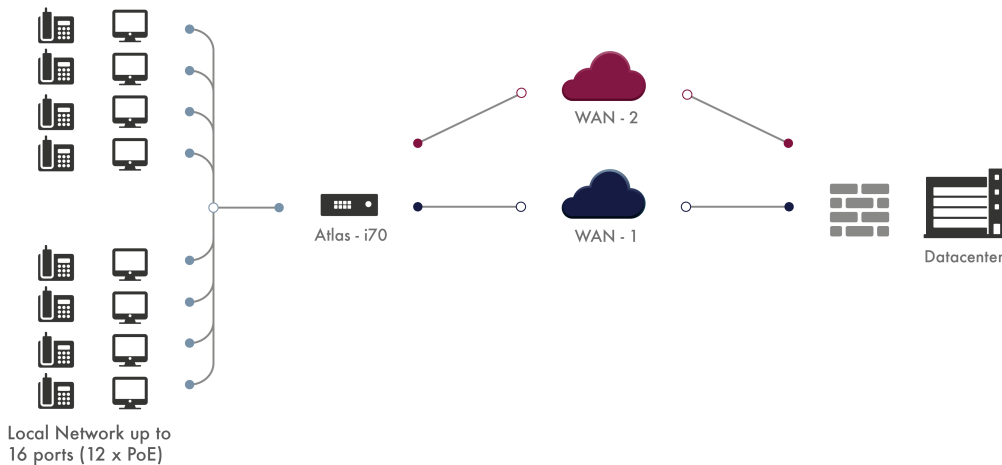


Figure: Fixed and mobile connectivity

Key Features

Up to 1 Gbps Reliable in scenarios of up to one Gbps symmetrical (IMIX) services thanks to its powerful hardware architecture with hardware encryption.

High encryption capacity Teldat offers IPSec VPNs that are compatible with the most common solutions in the market and with a higher performance rate than their competitors in relation to cost.

Electrical/optical port on motherboard-not occupying Dual built-in electrical/optical Gigabit Ethernet interface that does not take up a slot. No compromise on scalability and the use of alternative access technologies (such as G.SHDSL, E1 or ADSL/VDSL) as redundant path.

8xGE switch on the motherboard, not taking up a slot The built-in switch is ideal for small offices because it eliminates the need for an external switch, thus reducing costs and points of failure. GE, duplex, self-negotiable ports with optional PoE.

Double slot and wide range of cards In addition to WAN and LAN access, it also has two slots that allow it to adapt to complex double/triple connection scenarios with the external network. Cards include FO, VDSL, Serial, 8xGE, E1/T1, G.SHDSL, etc.

Central management and ZTP provisioning Atlas-i70 can be managed with Cloud NetManager tool and it supports "Zero Touch Provisioning" for easy network deployments.

Security: Firewall, IPSec, etc. Corporate communications require corporate security. The Atlas-i70 provides the state-of-the-art in security. ACLs, Firewall(L3-L7), 802.1x, IPSec (optional hardware encryption), etc.

Advanced services The Atlas-i70 software includes all the advanced functions needed in corporate networks and operator services, ready for the most demanding scenarios like MPLS and managed services.

Specifically designed for installation on racks Medium and large offices devices need to be fitted in standard cabinets with forced ventilation. The Atlas-i70 is specifically designed for these types of installations.

Console port Operator/integrator managed services require out-of-band management to prevent them from interfering with customer networks. The console port is the most common method.

HARDWARE TECHNICAL FEATURES

Two expansion slots

WAN cards: Fiber, ADSL/VDSL, Fiber + ADSL/VDSL, G.SHDSL, E1/T1, Serial

LAN cards: 8xGE with optional PoE

WAN+LAN cards: 4xGE switch extension/WAN configurable

Private network Ethernet connection

8-port Ethernet switch 10/100/1000

Optional PoE on 4 ports (Max 12xPoE ports)

RJ45 connector

Dimensions and weight

L x W x H: 442 x 320 x 44 mm

Approximate weight: 4 Kg

Format: Desktop and additional rack mount bracket

Optical/electrical Gigabit interface

SFP optical interface and RJ45 electrical interface (mutually exclusive)

Optical interface: 1000 Mbps (1000BASE-X) LX/LH-SX-ZX

Electrical interface: 10/100/1000 Mbps

Storage slots for data storage*

Standard hard drive slot, accessible from the outside

SD memory card slot for data that don't need very much space

*For future use of applications

Environmental specifications

Temperature: 0 to 45 °C

Relative humidity: 5 to 90%

Atmospheric pressure: 700 to 1060 mbars

SOFTWARE TECHNICAL FEATURES

IP protocol

ARP, ARP Proxy, MTU discovery, NAT, ECMP, BFD

RIP, OSPF, BGP, policy based static and dynamic routing

Virtual Router Forwarding (Multi-VRF)

Security

IPSec support in transport and tunnel mode

Authentication: Pre-shared, RSA, Certificates, MSD, SHA-1

Encryption: DES (56 bits), 3DES (168 bits), AES (128, 192 and 256 bits)

IP services

DHCP, DNS, FTP, SFTP, SSH, Telnet server and client

NTP, LDAP, Syslog, SCP client. TFTP server

DHCP, dynDNS relay

IPv6

Dual Stack, IPv6oIPv4, IPv4oIPv6, GRE, 6rd, DHCPv6, ICMPv6, SLAAC

RIPng, OSPFv3 and MP-BGP static and dynamic routing

Multicast: MLD, MLDv2, Listener, Querier

Management

CLI configuration and storage in a plain text file

User/group license assignment

TACACS+ and RADIUS AAA support, Netflow, RMON, SNMPv1, v2c y v3

IP protocol (2)

Multicast: IGMP (v1,v2, v3), PIM-SM, MSDP, MLD, MLDv2

IPSLA service probes (delay, packet loss, jitter)

High availability: VRRP, TVRP (HSRP compatible)

Security (2)

Certificates: CSR, SCEP, X.509v3, PKIX, LDAP revocation

Static and dynamic access lists and session-based Firewall

Dos/DDoS detection

Quality of Service

Classification, marking, BW management, BW prioritization and limitation

Up to 32 types 16 queues per interface

Strict policies (PQ), Low latency (LLQ), by weight/type (WFQ, CBWFQ)

VoIP

Protocols: SIP (UDP, TCP, TLS), H323, UA-NOE, SRTP, SCCP

SIP, UA-NOE, H323 and SCCP terminal support

Survival services: calls, hold, transfers

SDWAN networks

Overlay over hybrid networks with App-aware routing, QoS and Visibility

Central SD-WAN flow control including Zero Touch Provisioning Applications Service Chaining

ADDITIONAL TECHNICAL FEATURES

Console interface

RJ45 connector with proprietary pinouts (adapter included)

Type RS232, N81

Default speed 9600 bps, maximum speed 115200 bps

MTBF and maximum power consumption

MTBF: 467 KHours

Max. Power: 40W without external USB

LEDs

Power supply, slot, USB, status, switch

GE-SFP, GE-Eth, HD/SD

2 additional LEDs per Ethernet port (link, speed and activity)

FLEXIBLE

COMMUNICATIONS SOLUTIONS

THAT GROW WITH YOU.

Atlas-i70 corporate router

Modular router for 1 Gbps services



Teldat is a leading provider in Enterprise Communications equipment and Services for the top corporate to mid-sized and SME markets.

About TELDAT



ROUTERS | Wi-Fi | MANAGEMENT | TRANSPORT | SMART GRID | INDUSTRIAL | VoIP | CLOUD | SECURITY | NFV |

Teldat Group is a leading technology holding that designs, manufactures and distributes advanced Internetworking platforms for corporate environments, providing new and cutting-edge communication solutions without ever losing sight of its customers real requirements. Teldat's solutions development is based on proprietary technology, which is in the Group's DNA. This allows Teldat to be a leading provider in Enterprise Communications equipment and Services for the top corporate to midsized markets, as well as the SME and SoHo markets.

From a geographical viewpoint, Teldat Group has a presence in all continents, with its corporate headquarters located in Spain, and operational affiliates in Europe (Germany, Austria, Portugal, Italy and France) and in LATAM (Mexico and Brazil), as well as two business development offices in USA and China.

Teldat | **GROUP** | Headquarters

Spain

Teldat S.A.
Parque Tecnológico de Madrid
Tres Cantos - 28760
Madrid (Spain)
Phone: +34 91 807 6565
info@teldat.com

Germany

bintec elmeg GmbH
Suedwestpark 94. 90449
Nuremberg (Germany)
Phone: +49 911 9673 0
info@bintec-elmeg.com

Our sales offices contact details are on www.teldat.com



©2018 Teldat S.A. | This data sheet shall be used only for information purposes. Teldat reserves the right to modify any specification without prior notice. All trademarks mentioned in this document are the property of their respective owners. Teldat accepts no responsibility for the accuracy of the information from third parties contained on this document.
Publish Date: August 30, 2018
Version: 20180830075505