

### Introduction

### Product Highlights

- ▶ Wi-Fi 6 Multi-User-MIMO 4x4 for up- and down link
- ▶ 2,4 Gbit/s @ 5GHz and 1,1 Gbit/s\* @ 2,4 GHz
- ▶ 802.11ax technology for 2,4 and 5 GHz band
- ▶ 8 antennas for optimized coverage and performance
- ▶ Integrated Bluetooth for IoT applications
- ▶ Easiest ceiling mounting on system ceilings

### Interfaces

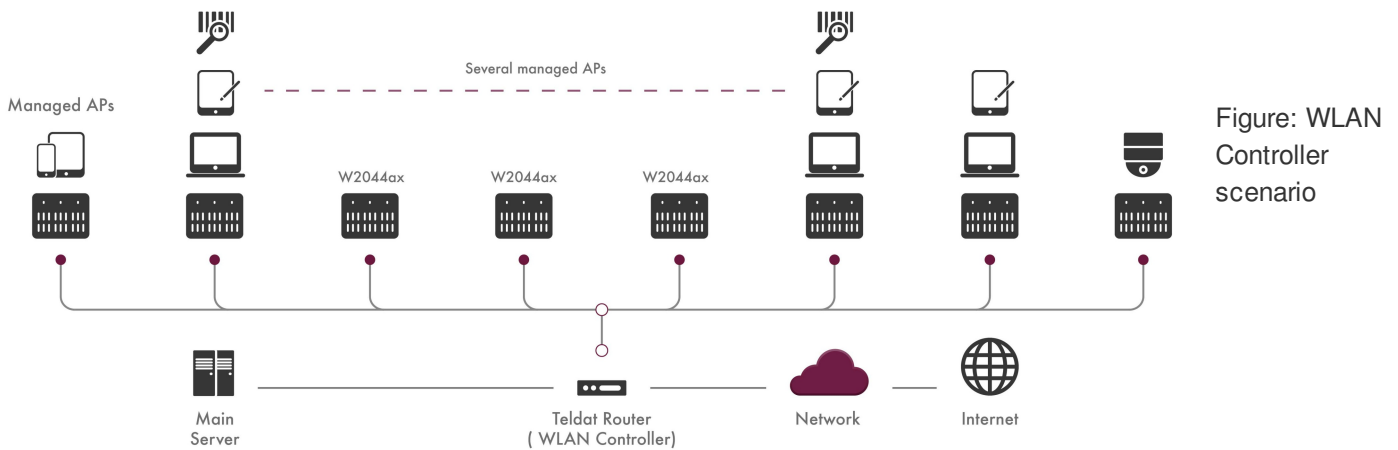
### W2044ax

LAN / WAN	100/1000/2500 Mbps Ethernet
Radio 1	IEEE 802.11b/g/n/ax MIMO 4x4
Radio 2	IEEE 802.11ax/ac/n/a MU-MIMO 4x4
Bluetooth	Bluetooth 4.2

### Competitive Advantage

State of Art Wi-Fi Technology	Dual-Radio 4x4 MU-MIMO 802.11ax Wi-Fi 6 with high level security WPA3
Attractive Price-Performance Ratio	Competitive price reaching up to 3,6 Gbps aggregated PHY bitrate
Simple, efficient administration	Web configuration (http/https), CAPWAP support from WLAN Controller in Teldat router, Teldat's Cloud based management
Easy Installation	Ceiling mount kit, Powered over PoE+ IEEE 802.3at, compatible with 802.3at PoE injectors or PSU

# Scenarios



## Key Features

**Use cases** Wi-Fi LAN connectivity for high density environments Wi-Fi LAN connectivity for critical scenarios dependant on latency or high capacity

**Security** Most updated encrypted and secured with WPA3-Personal/Enterprise, Rogue APs detection, WIDS, 802.1x

**Quality of Service** Traffic prioritization by means of categories based on 802.11e/WMM

**Very easy configuration** - Centralized mode: Zero Touch Provisioning from Cloud Net Manager - Local mode: WLAN Controller detects and configures the new Access Point connected to the LAN - Manual Mode: Simple GUI

**Optimized roaming** 802.1k, 802.1v, 802.1r together provide with a fast and transparent roaming to the user

## HARDWARE TECHNICAL FEATURES

### Interfaces and connectors

1 x 100/1000/2500 Mbps Ethernet twisted pair, autosensing, auto MDI/MDI-X

1 x Radio module IEEE 802.11b/g/n/ax MIMO 4x4

1 x Radio module IEEE 802.11ax/ac/n/a MU-MIMO 4x4

### Power supply

External wall power supply 230V / 12V DC, 3A

The wall adaptor is a accessory and not include the shipment

Power-over-Ethernet according 802.3at

### Environmental Specifications and consumption

Temperature operating: 0°C to 45°C; storage: -10°C to 70°C;  
rel. humidity 10 to 95% (non condensing)

Max power consumption: t.b.d

### Antennas

Integrated single band MIMO antenna, four antenna elements for each radio

2 dBm gain @ 2,4 GHz; 3 dBm gain @ 5 GHz

### Dimensions and casing

Approx. 216 mm x 216 mm x 51 mm (width x depth x height)

Status, Activity for WLAN1, WLAN2 and Ethernet, LEDs defeatable

## SOFTWARE TECHNICAL FEATURES

### Wi-Fi Interface

Airtime Fairness, Client Band Select, Client Management, Data rate trimming

Client Management 802.11k/v, Low SNR threshold management

Seamless roaming with IAPP, Fast BSS Transition 802.11r

### WLAN Security Modes

WPA3-SAE; WPA2/3-PSK; WPA2-PSK; WPA1/2-PSK; WPA-PSK;  
WPA3-Enterprise

WPA2/3-Enterprise; WPA2-Enterprise; WPA1/2-Enterprise; WPA-Enterprise

Open, OWE; OWE-Transition

### Management/administration

Graphical user interface

Managed by a local WLAN Controller, works as WTP

Supported Cloud Management Systems

### Energy Management

MIMO 1x1 shift down

802.3az support

The LEDs has three operation mode: Status, Flashing, Off

### IEEE802.11i Authentication and encryption

802.1x/EAP-MD5, 802.1x/EAP-TLS, 802.1x/EAP-TTLS,  
802.1x/EAP-PEAP, key management

### Detection mechanisms

MAC address filter for WLAN clients (white list)

WIDS (Wireless Intrusion Detection System); Rogue AP, Neighbor AP

### Power optimization

TWT

### VLANs

Network segments on layer2 is possible

For each SSID one VLAN ID is available

Static VLAN configuration according IEEE 802.1q

## ADDITIONAL TECHNICAL FEATURES

### Certifications

Directive 2014/53/EU, 2011/65/EU, Regulation (EC)

No.1907/2006:2006-12

EN 300 328; EN 301489-1; EN301489-17; EN 301893; EN 62311; EN 50585;

EN 60601-1-2 (Medical devices - part 1-2)

### Open Source Information at bintec's website

### Additional components

MS5999027522 Power supply 12V with EU socket

MS5520000163 Ceiling mounting W2022ac/W2022ax/W2044ax

# FLEXIBLE

## COMMUNICATIONS SOLUTIONS

### THAT GROW WITH YOU.

## W2044ax Wi-Fi 6 WLAN High-End Access Point

Indoor Access Point



**Teldat is a leading provider in Enterprise Communications equipment and Services for the top corporate to mid-sized and SME markets.**

### About TELDAT



**ROUTERS | Wi-Fi | MANAGEMENT | TRANSPORT | SMART GRID | INDUSTRIAL | VoIP | CLOUD | SECURITY | NFV |**

Teldat Group is a leading technology holding that designs, manufactures and distributes advanced Internetworking platforms for corporate environments, providing new and cutting-edge communication solutions without ever losing sight of its customers real requirements. Teldat's solutions development is based on proprietary technology, which is in the Group's DNA. This allows Teldat to be a leading provider in Enterprise Communications equipment and Services for the top corporate to midsized markets, as well as the SME and SoHo markets.

From a geographical viewpoint, Teldat Group has a presence in all continents, with its corporate headquarters located in Spain, and operational affiliates in Europe (Germany, Austria, Portugal, Italy and France) and in LATAM (Mexico and Brazil), as well as two business development offices in USA and China.

 **Teldat** | **GROUP** | Headquarters

#### Spain

Teldat S.A.  
Parque Tecnológico de Madrid  
Tres Cantos - 28760  
Madrid (Spain)  
Phone: +34 91 807 6565  
info@teldat.com

#### Germany

bintec elmeg GmbH  
Suedwestpark 94. 90449  
Nuremberg (Germany)  
Phone: +49 911 9673 0  
info@bintec-elmeg.com

Our sales offices contact details are on [www.teldat.com](http://www.teldat.com)



©2018 Teldat S.A. | This data sheet shall be used only for information purposes. Teldat reserves the right to modify any specification without prior notice. All trademarks mentioned in this document are the property of their respective owners. Teldat accepts no responsibility for the accuracy of the information from third parties contained on this document.  
**Publish Date:** July 12, 2021  
**Version:** 20210712114409